

CHD2-[CHR] (His)

CATALOG NO.: RD-11-411

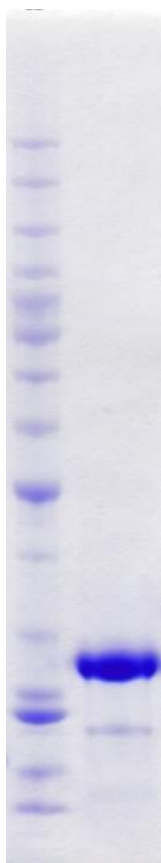
LOT NO.:

DESCRIPTION: Human recombinant CHD2 (residues 257-456; Genbank Accession # NM_001271.3; MW = 24.1 kDa) expressed as an N-terminal His-fusion protein in *E. coli*.

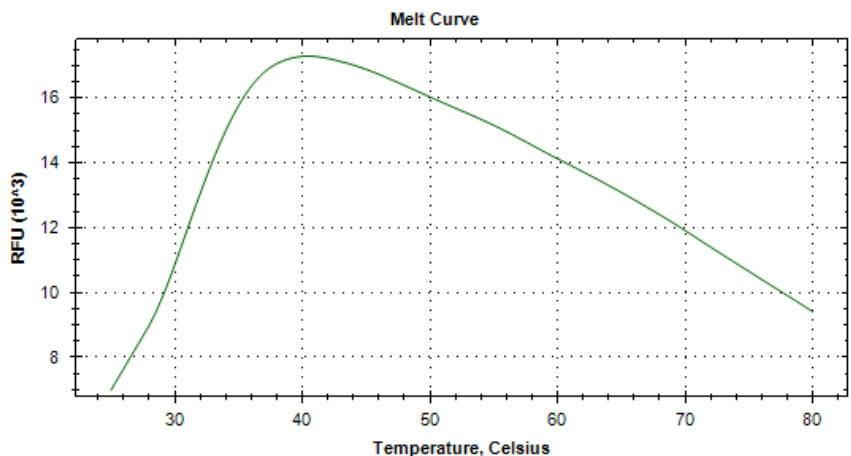
PURITY: >90% by SDS-PAGE

SUPPLIED AS: $_ \mu\text{g}/\mu\text{L}$ in 50 mM Tris HCl, pH 7.5, 500 mM NaCl, 1 mM TCEP, 10% glycerol as determined by OD₂₈₀.

STORAGE: -70°C. Thaw quickly and store on ice before use. The remaining, unused, undiluted protein should be snap frozen, for example in a dry ice/ethanol bath or liquid nitrogen. Minimize freeze/thaws if possible, but very low volume aliquots (<5 μl) or storage of diluted enzyme is not recommended.



Coomassie blue-stained SDS-PAGE (4-12% acrylamide) of 4 μg of RBC CHD2 [CHR] (His). MW markers (left) are, from top, 220, 160, 120, 100, 90, 80, 70, 60, 50, 40, 30, 25, 20, 15, 10 kDa.



Differential Scanning Fluorimetry of RBC CHD2-[CHR] (His). Thermal denaturation of CHD2 [CHR] (His) is detected (CFX384™ Touch thermal cycler, 'FRET' channel; Bio-Rad) by increased binding and fluorescence of the dye SYPRO® Orange (Life Technologies). Apo form of CHD2-[CHR] (His) displays a T_m of 31°C.

This product is not intended for therapeutic or diagnostic use in animals or in humans.

Reaction Biology

1 Great Valley Parkway, Malvern PA, USA 19355

requests@reactionbiology.com www.reactionbiology.com